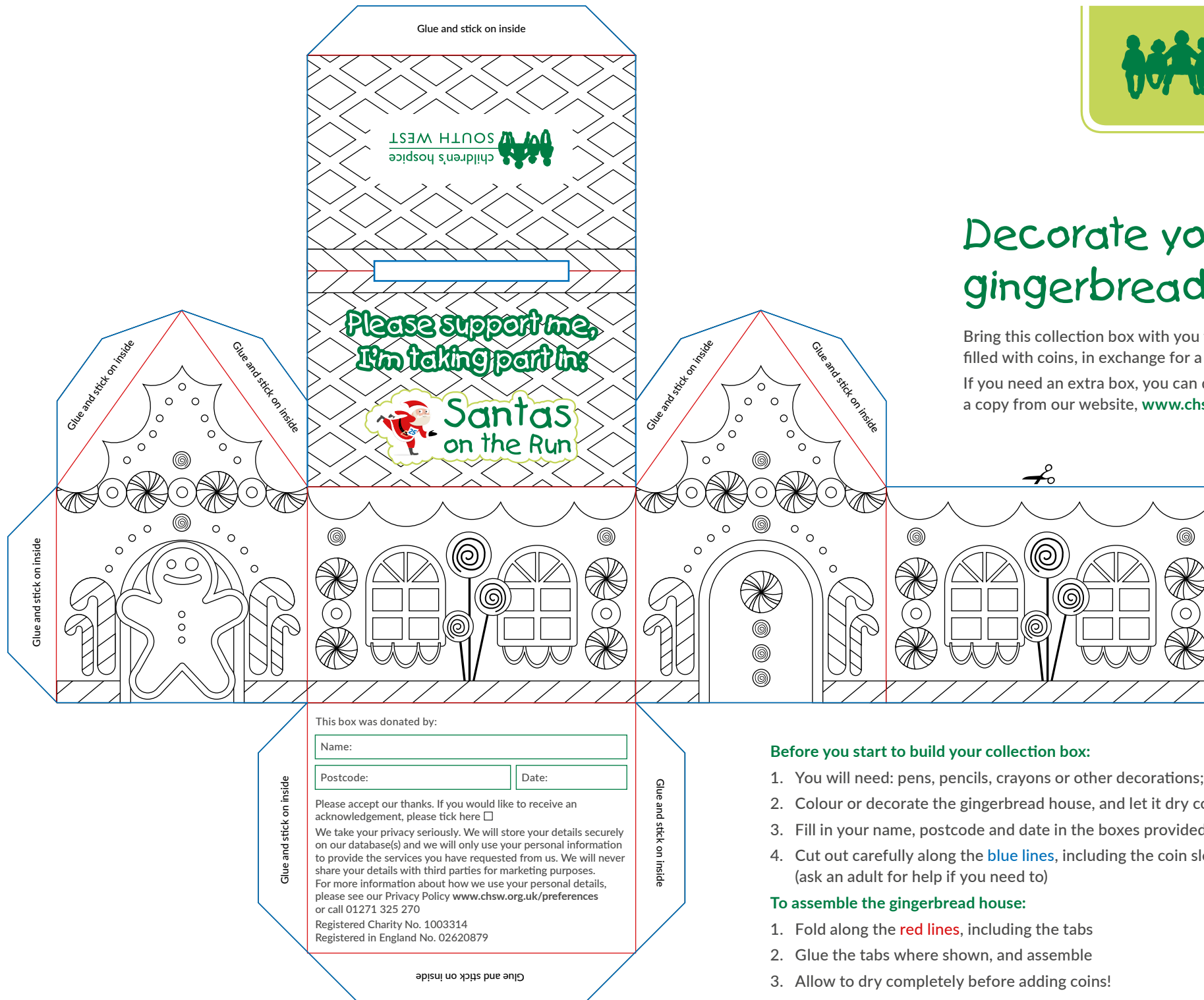


Decorate your own gingerbread house!

Bring this collection box with you to your Santa Run, filled with coins, in exchange for a festive treat.

If you need an extra box, you can download and print a copy from our website, www.chsw.org.uk/santas



Before you start to build your collection box:

1. You will need: pens, pencils, crayons or other decorations; a pair of scissors; glue
2. Colour or decorate the gingerbread house, and let it dry completely
3. Fill in your name, postcode and date in the boxes provided
4. Cut out carefully along the **blue lines**, including the coin slot on the roof (ask an adult for help if you need to)

To assemble the gingerbread house:

1. Fold along the **red lines**, including the tabs
2. Glue the tabs where shown, and assemble
3. Allow to dry completely before adding coins!