



children's hospice  
SOUTH WEST



## Raise festive cheer in your Christmas gear!

Thank you for signing up for Santas on the Run. Together we will raise awareness and vital funds for babies, children and young people living with life-limiting conditions and their families across the South West.

This pack has information and materials to help with your fundraising, a colour-in coin collecting sheet and gingerbread house, as well as a sponsor form. Don't forget to join our Santas on the Run North Somerset Facebook event for fundraising ideas, to get involved and share your festive photos.

£30...

could help fund our 24-hour phone line so that even at Christmas, every call is answered.

£86...

could help fund 1 hour of care for a family at one of our hospices at Christmas and all year round.

£100...

could help provide a parent with an uninterrupted night's sleep and the strength to face tomorrow.





## Ideas and tips to maximise your fundraising

We ask each participant to commit to raise £30 as an individual, or £86 as a family, for babies, children, young people and their families. Below are some fun ideas to get you started:

- ☺ Ask family and friends to sponsor you via your online fundraising page
- ☺ Spread the word and ask for sponsorship on social media using the sharing graphic available to download at [www.chsw.org.uk/santas](http://www.chsw.org.uk/santas)
- ☺ Invite friends and family to sign up and join your fundraising team
- ☺ Host a Christmas quiz or bingo and ask for donations to take part
- ☺ Get baking and have a Christmas cookie and cake sale
- ☺ Decorate your house in external Christmas lights and ask for donations
- ☺ Organise a raffle for a Christmas hamper
- ☺ Hold a festive dress down day at your workplace in return for a donation
- ☺ Always have your gingerbread collection house or sponsor form ready so you don't miss any donations.

**Dig out the tinsel, recycle your Santa suit or even create your own costume for some festive fun.** We cannot wait to see your festive fancy dress on the day, and here are some ideas to get you thinking:

- ☺ Get creative with Christmas face paints
- ☺ Sleigh it like Santa - dress up in red and decorate your Santa beard
- ☺ Rock it like Rudolph - make reindeer ears with baubles
- ☺ Twinkle like tinsel - create an outfit with Christmas decorations and lights
- ☺ Sock it like a snowman
- ☺ Find a white T-shirt and decorate it with festive pictures
- ☺ Colour in your Santa running bib on page 8
- ☺ Make your own Christmas flag to carry.

**Join our Santas on the Run North Somerset Facebook event** to join other festive fundraisers and not miss anything extra happening over the weekend!



## Collecting your fundraising

**Fundraise online.** Simple to set up and means you have no money to collect! Sponsors can add Gift Aid (an extra 25p for every £1 donated). Set up an online giving page on Facebook, or at [www.justgiving.com](http://www.justgiving.com)

**Cash donations.** Use the sponsor form included, collect cash and pay in donations online or by sending a cheque in the post. Gift Aid can be added too!

**Collect coins.** Colour in your coin collection card and gingerbread house, and collect coins from family and friends. You can always print off extra copies if you fill them up!



## Here to support you

Our Fundraising Teams are on hand to support you, simply call your local CHSW children's hospice or email [events@chsw.org.uk](mailto:events@chsw.org.uk)

### Little Bridge House

Redlands Road, Fremington, Barnstaple, Devon EX31 2PZ ☎ 01271 325 270

### Charlton Farm

Charlton Drive, Wraxall, North Somerset BS48 1PE ☎ 01275 866 600

### Little Harbour

Porthpean Road, Porthpean, St Austell, Cornwall PL26 6AZ ☎ 01726 871 800



## How your fundraising helps

By taking part in Santas on the Run, you will be helping Children's Hospice South West make the most of the lives of babies, children and young people with life-limiting conditions and their families. The funds you raise will help to support families now and in the future.

Each hospice is a loving and caring place, where every member of every family who stays can forget their worries for a while, be a family again and receive expert help and support with facing an uncertain future.



Making the most of short and precious lives across the South West  
[www.chsw.org.uk](http://www.chsw.org.uk)

Registered Charity No. 1003314



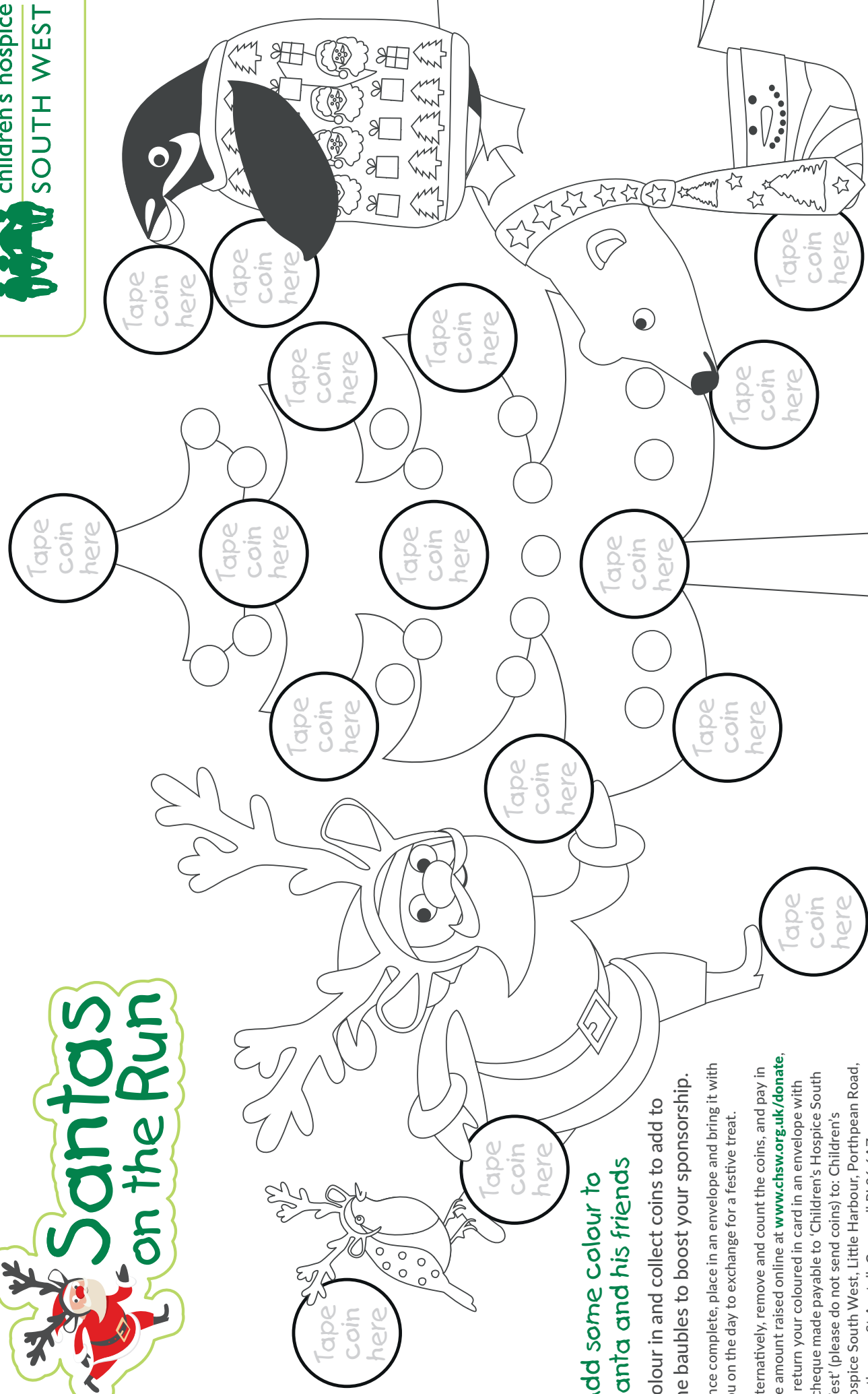


## Add some colour to Santa and his friends

Colour in and collect coins to add to the baubles to boost your sponsorship.

Once complete, place in an envelope and bring it with you on the day to exchange for a festive treat.

Alternatively, remove and count the coins, and pay in the amount raised online at [www.chsw.org.uk/donate](https://www.chsw.org.uk/donate), or return your coloured in card in an envelope with a cheque made payable to 'Children's Hospice South West' (please do not send coins) to: Children's Hospice South West, Little Harbour, Porthpean Road, Porthpean, St Austell, Cornwall PL26 6AZ



Name:

Postcode:

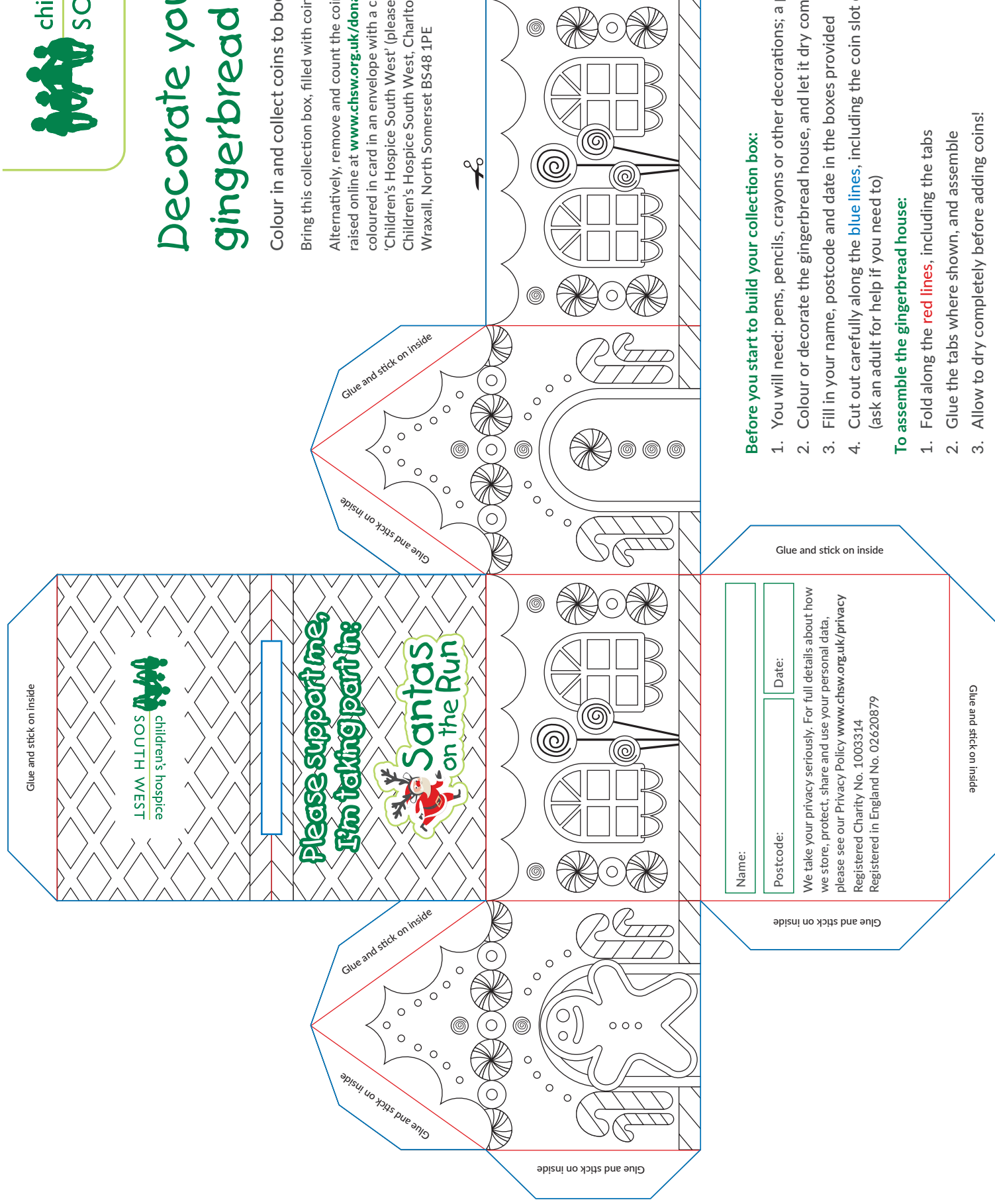
## Decorate your own gingerbread house!

Colour in and collect coins to boost your sponsorship.

Bring this collection box, filled with coins, with you on the day.

Alternatively, remove and count the coins, and pay in the amount raised online at [www.chsw.org.uk/donate](http://www.chsw.org.uk/donate), or return your

coloured in card in an envelope with a cheque made payable to 'Children's Hospice South West' (please do not send coins) to: Children's Hospice South West, Charlton Farm, Charlton Drive, Wraxall, North Somerset BS48 1PE



Before you start to build your collection box:

1. You will need: pens, pencils, crayons or other decorations; a pair of scissors and glue
2. Colour or decorate the gingerbread house, and let it dry completely
3. Fill in your name, postcode and date in the boxes provided
4. Cut out carefully along the **blue lines**, including the coin slot on the roof (ask an adult for help if you need to)

## To assemble the gingerbread house:

1. Fold along the **red lines**, including the tabs
2. Glue the tabs where shown, and assemble
3. Allow to dry completely before adding coins!



Raising festive cheer in my festive gear!



Santas  
on the Run

Fundraising event

Raising smiles for  
 children's hospice  
SOUTH WEST

Registered Charity No. 1003314

[www.chsw.org.uk/santas](http://www.chsw.org.uk/santas)

Event



Where



When



Contact



Supporting  
 children's hospice  
SOUTH WEST

Registered Charity No. 1003314

We're helping to make the most of short  
and precious lives across the South West

[www.chsw.org.uk](http://www.chsw.org.uk)



# Please sponsor me

Title: Full first name:

Surname:

Home address:

Postcode:

Tel no:

Email:

Team name:

☐ My employer offers a matched giving scheme to match the amount I raise

Your employer's name:

We take your privacy seriously. For full details about how we store, protect, share and use your personal data, please see our Privacy Policy [www.chsw.org.uk/privacy](http://www.chsw.org.uk/privacy)

Thank you for your sponsorship, if you would prefer not to receive an acknowledgement, please tick here ☐



Sunday 7 December 2025  
Charlton Farm, North Somerset

I pledge to raise  
£ .....  
to help short and precious  
lives across the South West



Registered with  
FUNDRAISING  
REGULATOR

*giftaid it*

Full name + home address + postcode + ✓ = Gift Aid

If I have ticked the box headed 'Gift Aid' ☒ I confirm that I am a UK Income or Capital Gains taxpayer. I have read this statement and want Children's Hospice South West to reclaim tax on the donations detailed below, given on the date shown. I understand that if I pay less Income Tax/or Capital Gains tax in the current tax year than the amount of Gift Aid claimed on all of my donations it is my responsibility to pay any difference. I understand that the charity will reclaim 25p of tax on every £1 that I have given.

Full Name (First name and surname)	Home Address Not your work address (this is essential for Gift Aid)	Postcode	£s Pledged	£s Received	Date Given	Gift Aid
Mr John Smith	37 Lavender Close, Brighton, East Sussex	BNI 3SR	£20	£20	14/01/2025	✓



Making the most of short and precious lives across the South West  
[www.chsw.org.uk](http://www.chsw.org.uk)

Registered Charity No. 1003314



Please sponsor me



## Santas on the Run continuation sheet

giftaid it

Full name + home address + postcode + ✓ = Gift Aid

If I have ticked the box headed 'Gift Aid' ☒ I confirm that I am a UK Income or Capital Gains taxpayer. I have read this statement and want Children's Hospice South West to reclaim tax on the donations detailed below, given on the date shown. I understand that if I pay less Income Tax/or Capital Gains tax in the current tax year than the amount of Gift Aid claimed on all of my donations it is my responsibility to pay any difference. I understand that the charity will reclaim 25p of tax on every £1 that I have given.

[illegible]

**Return your sponsor money using an option below and complete the details to the right:**

- Return your sponsor forms and cash or cheque, made payable to 'Children's Hospice South West,' to your local hospice or the head office (please do not send cash or coins in the post): Little Bridge House (head office), Redlands Road, Fremington, Barnstaple, Devon EX31 2PZ  
Charlton Farm, Charlton Drive, Wraxall, North Somerset BS48 1PE  
Little Harbour, Porthpean Road, Porthpean, St Austell, Cornwall PL26 6AZ
- Visit [www.chsw.org.uk/donate](http://www.chsw.org.uk/donate) and use our online form. Please remember to post your sponsor forms to us so if your sponsors have ticked the Gift Aid box we will be able to claim an extra 25p for every £1 you raise!

Date paid/sent:

Amount paid/sent: £

Please indicate how you paid

- ☐ Post    ☐ CHSW website  
☐ Local hospice

Published date: 18 August 2025



I'm spreading festive cheer because:

Raising smiles for  
 children's hospice  
 SOUTH WEST  
 Registered Charity No. 1003314



## Your Santas on the Run bib

1. Colour in the Santa scene and add why you are taking part
2. Cut out your bib around the dashed line
3. Add holes with a hole puncher as marked on each corner (for added strength, wrap some transparent adhesive tape to these corners before making the holes)
4. Get festive, attach your bib to your costume before heading out to spread festive cheer, raising money for babies, children and young people living with life-limiting conditions and their families.